

FUND DISBURSEMENT AND ALLOCATION

	2007/2008		2008/2009	
	People Served*	Disbursement \$	People Served*	Allocation \$
Dignifying the Lives of the Elderly				
Alzheimer's Disease Association				
• New Horizon Centre (Toa Payoh)	238	74,557	244	73,756
• Specialised Caregiver Support Service (Dementia)	1,000	57,190	1,000	71,126
• Centre of Specialisation (Early Dementia Care) ¹	-	7,500	-	-
Asian Women's Welfare Association				
• Centre for Caregivers	1,200	208,064	1,200	212,253
• Community Home for Senior Citizens	133	382,801	137	452,758
• READYCARE Centre	22	126,897	23	135,697
Bright Hill Evergreen Home	139	430,750	150	459,415
Care Corner Family Service Centre (Toa Payoh)				
• Care Coordinator	240	30,032	240	31,056
HCA Hospice Care				
• Hospice Day Care Centre	496	372,957	504	394,423
• Hospice Home Care Service	5,518	906,258	6,060	1,001,207
• Specialised Caregiver Support Service (Palliative)	1,000	46,025	1,000	71,126
Islamic Theological Association of Singapore				
• PERTAPIS Senior Citizens Fellowship Home	40	73,864	40	60,323
Lions Befriender Service Association (Singapore)				
• Lions Befrienders	1,774	397,293	1,866	441,689
Methodist Welfare Services				
• Bethany Home Help Service ²	30	35,362	-	-
Metta Welfare Association				
• Hospice Care	406	39,748	428	26,670
O'Joy Care Services				
• Care Coordinator	240	30,032	240	31,056
Presbyterian Community Services				
• Dorcas Home Care Service	32	27,711	34	29,576
Sathya Sai Social Service				
• Tembusu Home Help Service ³	-	-	76	7,169
Singapore Action Group of Elders				
• Counselling Centre	238	162,839	291	168,376
• The Seniors Helpline	6,500	29,006	8,000	29,988
Singapore Leprosy Relief Association Home	59	294,847	63	323,400
Society of Moral Charities				
• Case Management Service	2,448	157,134	2,464	232,158
• Home Help Service (East)	572	137,442	99	63,782
• Home Help Service (West)	1,327	354,043	256	188,914
Sree Narayana Mission Home for the Aged Sick	184	498,019	169	384,824
Sunlove Abode for the Intellectually-Infirm Limited				
• Dementia Day Care	56	60,554	58	65,277
• Home Help Service	74	65,838	85	70,098
Sunshine Welfare Action Mission				
• Dementia Day Care	234	57,126	230	61,541
• Home Help Service	337	86,407	378	102,332
The Salvation Army Family Support Services				
• Care Coordinator	240	30,032	240	31,056
TOUCH Community Services				
• Home Care	76	87,442	80	91,031

* This is based on service-use counts plus public education outreach.

FUND DISBURSEMENT AND ALLOCATION

	2007/2008		2008/2009	
	People Served*	Disbursement \$	People Served*	Allocation \$
Tsao Foundation Limited				
• Hua Mei Care Management Service	243	132,233	240	136,710
• Centre of Specialisation (Befriending) ¹	-	12,793	-	-
Centre of Specialisation (Elderly) ³	-	-	-	25,000
Subtotal	25,096	5,412,796	25,895	5,473,787

Helping People with Disabilities Lead Independent Lives

Association for Persons with Special Needs				
• Centre for Adults	141	462,196	176	553,087
Autism Association (Singapore)				
• Autism Youth Centre	28	62,244	30	68,757
Bizlink Centre Singapore Limited				
• Business Development Division	89	319,265	87	321,889
• Employment Placement Division	250	312,768	345	334,487
• Vocational Assessment Division	783	360,198	1,500	369,905
Metta Welfare Association				
• Day Activity Centre for the Intellectually Disabled	80	88,920	80	91,677
Movement for the Intellectually Disabled of Singapore				
• Ang Mo Kio Training and Development Centre	46	262,634	47	269,768
• Clementi Training and Development Centre	37	224,891	50	244,548
• IDEA Employment Development Centre	292	892,906	316	996,390
• SIA-MINDS Employment Development Centre	354	1,078,514	372	1,166,722
• Yio Chu Kang Employment Development Centre	140	465,420	204	669,312
• MINDS MYG	137	16,730	180	17,249
• Ville@Napiri - Home	91	497,843	159	562,301
• Ville@Napiri - Hostel/Group Home	47	208,248	51	226,038
• Ville@Napiri - Napiri Training and Development Centre	40	88,920	52	110,012
National Council of Social Service				
• Developmental Disability Registry ⁴	4,000	2,886	4,000	-
• Special Assistance Fund	151	211,020	180	200,000
• 'LTA Cares' Fund	84	157,880	70	190,000
Singapore Association for Mental Health				
• Bukit Gombak Group Homes	62	59,783	82	41,785
• Oasis Day Centre	72	148,089	72	151,887
Singapore Association for the Deaf				
• Deaf Access	2,031	169,787	2,000	174,949
Society of Moral Charities				
• Community Integration Support Programme for People with Visual Impairment	100	125,536	615	128,977
• Skills Training & Sheltered Workshop	42	119,049	70	206,514
• Therapy Hub	1,500	185,904	1,575	255,554
• Car Park Label Scheme	960	61,009	1020	47,175
Society for the Physically Disabled				
• SOKA Day Activity Centre	46	338,202	100	357,385
• Work Activity Centre	7,199	442,313	7,240	496,314
• Assistive Technology Centre (ATC)	110	157,732	115	162,622
• Therapy Hub	1,500	247,872	1,575	255,554
Spastic Children's Association of Singapore				
• Day Activity Centre for Persons with Cerebral Palsy and Other Disabilities	48	106,704	25	57,298
• Goodwill Rehabilitation & Occupational Workshop	71	321,725	79	355,564
• Seating Project	120	39,580	120	40,817
• Therapy Rehabilitation	1,006	1,119,117	1,006	1,154,067
SUN-DAC Centre for the Disabled (2 centres)	72	254,299	76	283,064

* This is based on service-use counts plus public education outreach.

FUND DISBURSEMENT AND ALLOCATION

	2007/2008		2008/2009	
	People Served*	Disbursement \$	People Served*	Allocation \$
The Singapore Cheshire Home				
• Day Care Centre	25	122,843	33	101,729
• Residential Care	60	365,422	68	329,859
TOUCH Community Services				
• Ubi Hostel	32	69,171	32	78,998
Centre of Specialisation (Adult Disability) ³	-	-	-	25,000
Subtotal	21,846	10,167,620	23,802	11,097,254

Keeping Families Together

Asian Women's Welfare Association				
• Family Service Centre	4,232	377,616	4,232	390,298
As-Salaam PPIS Family Support Centre				
• Family Support Centre	18,386	562,133	18,386	578,618
• Programme for Remarriages and Stepfamilies	200	24,129	200	48,874
Beyond Social Services				
• Bukit Ho Swee Family Service Centre	4,200	413,920	4,200	427,989
Care Corner Counselling Centre	25,550	731,252	25,550	735,762
Care Corner Family Service Centre (Admiralty)	5,531	160,242	5,531	158,792
Care Corner Family Service Centre (Queenstown)	4,900	333,870	5,145	348,358
Care Corner Family Service Centre (Toa Payoh)	8,900	283,580	8,900	293,155
Care Corner Family Service Centre (Woodlands)	6,600	153,593	6,850	158,792
Counselling & Care Centre	4,082	643,645	3,478	629,950
Fei Yue Family Service Centre (3 centres)	11,746	704,333	11,746	728,127
HELP Family Service Centre	8,490	656,577	8,490	677,221
MacPherson Moral Family Service Centre	6,022	168,474	6,323	174,179
Methodist Welfare Services				
• Tampines Family Service Centre	7,205	330,255	7,318	348,358
National Council of Social Service				
• National Family Service Centre Helpline	10,000	21,972	10,000	30,200
PPIS Young Women Muslim Association				
• Jurong Family Service Centre	7,876	141,790	7,876	146,578
Samaritans of Singapore	43,946	802,502	44,056	828,945
Serangoon Moral Family Service Centre	2,650	113,432	2,650	117,262
Shan You Counselling & Casework	2,100	375,697	2,100	386,554
Singapore After-Care Association				
• Aftercare Case Management Service	1,540	84,820	1,226	75,135
Singapore Anti-Narcotics Association				
• Aftercare Case Management Service	540	48,356	740	56,881
Singapore Association for Mental Health				
• Insight Centre	6,970	550,727	6,970	567,904
Tanjong Pagar Family Service Centre	4,120	198,504	4,120	201,781
The Ang Mo Kio Family Service Centres (3 centres)	14,800	954,398	14,520	1,014,298
TRANS Centre (2 centres)	8,130	582,136	5,692	607,564
Centre of Specialisation (Family) ³	-	-	-	25,000
Subtotal	218,716	9,417,953	216,299	9,756,575

Nurturing Children to Succeed

Asian Women's Welfare Association				
• Early Years Centre (Early Intervention Programme for Infants and Children)	174	465,324	210	564,989
• Early Years Centre (First Challenge)	72	203,172	90	263,950

* This is based on service-use counts plus public education outreach.

FUND DISBURSEMENT AND ALLOCATION

	2007/2008		2008/2009	
	People Served*	Disbursement \$	People Served*	Allocation \$
• Special School	259	987,366	286	1,220,454
• TEACH ME	5,554	1,016,292	5,556	1,002,408
Association for Persons with Special Needs				
• Chao Yang School	311	920,479	313	912,827
• Delta Senior School ⁵	206	1,071,421	-	-
• Katong School	218	624,573	210	639,688
• Tanglin School	311	827,422	328	912,074
Autism Association (Singapore)				
• Autism Children's Centre (Clementi)	102	276,702	112	291,145
• Autism Children's Centre (Simei)	82	217,137	88	222,891
• Singapore Autism School	57	299,413	92	500,982
Autism Resource Centre				
• Pathlight School ⁵	369	389,862	345	129,432
• WeCAN	122	326,901	210	545,896
Canossian Daughters of Charity				
• Canossian School	131	399,322	122	384,597
Fei Yue Community Services				
• Early Intervention Programme for Infants and Children (EIPIC)	88	234,501	256	684,523
• eGEN	3,500	196,008	3,675	208,395
Methodist Welfare Services				
• Methodist Children & Youth Centre - Learning Centre Programme	50	43,172	50	44,510
Metta Welfare Association				
• Metta School ⁵	412	1,250,718	330	1,016,705
• Preschool Early Intervention Programme for Infants and Children	42	110,252	180	505,360
Movement for the Intellectually Disabled of Singapore				
• Ville@Napiri Children's Wing	17	71,253	32	69,878
• Guillemard Gardens School	148	526,688	141	522,146
• Jurong Gardens School	292	943,988	301	1,000,044
• Lee Kong Chian Gardens School	271	948,512	274	982,616
• Towner Gardens School	345	1,168,794	335	1,168,429
• Yio Chu Kang Gardens School	215	726,849	243	822,268
Persatuan Persuratan Pemuda Pemudi Melayu				
• Bestari Institute of Technical Education Programme	2,180	387,258	2,180	399,263
Presbyterian Community Services				
• Grace Orchard School	303	780,363	309	830,228
• Centre of Specialisation (Integration of Special Needs in Mainstream Preschool) ¹	-	10,000	-	-
Rainbow Centre				
• Balestier School	215	777,352	198	840,721
• Early Intervention Programme (Balestier)	241	711,907	280	755,507
• Margaret Drive School	279	908,704	266	1,008,324
• Early Intervention Programme (Margaret Drive)	292	672,848	310	825,764
• Training & Consultancy	849	292,911	1,450	317,032
Ramakrishna Mission				
• WINGS Counselling Centre	7,100	346,319	7,100	360,348
Singapore Association for the Deaf				
• Community Integration Support for the Hearing Impaired	90	364,430	96	405,509
• Singapore School for the Deaf	33	122,761	22	69,283
Singapore Association of the Visually Handicapped				
• Singapore School for the Visually Handicapped	65	219,288	62	204,296
Spastic Children's Association of Singapore				
• Early Intervention Programme for Infants and Children	152	353,551	204	568,083
• Spastic Children's Association School	253	973,274	267	1,056,300

* This is based on service-use counts plus public education outreach.

FUND DISBURSEMENT AND ALLOCATION

	2007/2008		2008/2009	
	People Served*	Disbursement \$	People Served*	Allocation \$
St Andrew's Mission Hospital				
• St Andrew's Autism School	27	118,786	51	128,958
Students Care Service				
• Educational Psychology Service	1,920	353,768	1,920	366,974
• Students Care Service (3 centres)	18,756	1,355,141	17,600	1,232,074
• Centre of Specialisation (School Social Work) ¹	-	10,460	-	-
Society of Moral Charities				
• Moral Early Intervention Programme for Infants and Children	224	539,242	270	766,320
• Moral Early Intervention Programme for Infants and Children Centre 2	24	101,048	210	596,466
Centre of Specialisation (Children Disability) ³	-	-	-	25,000
Subtotal	46,351	23,645,532	46,574	25,372,657
Total Fund Disbursement/ Allocation for Programmes	312,009	48,643,901	312,570	51,700,273

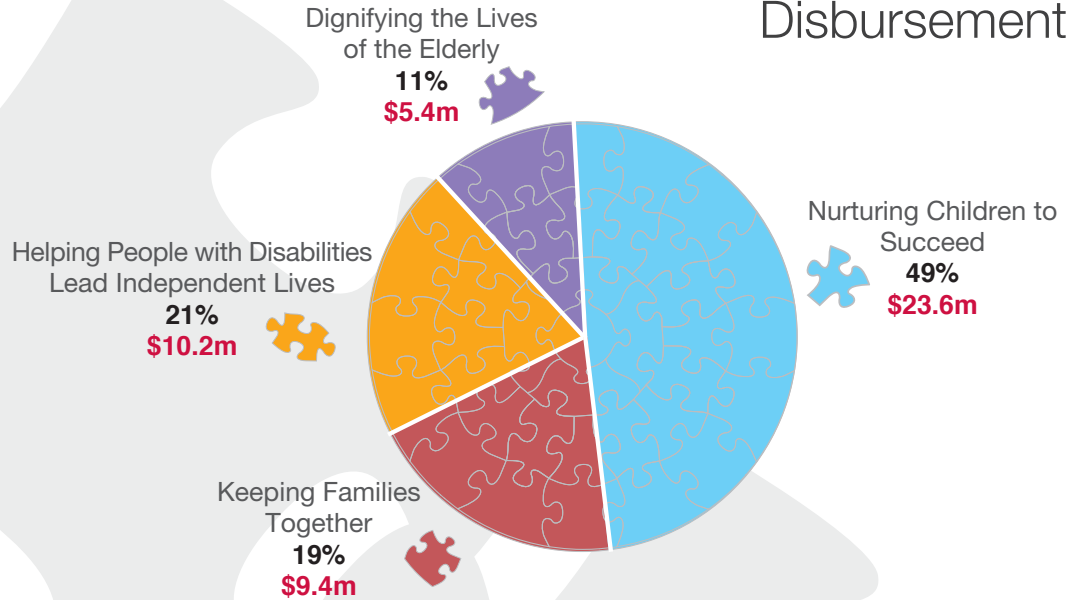
Notes

1. Programmes are funded as one-time project in FY2007/2008 with no additional funding set aside for FY2008/2009.
2. Funding for programme ceases with effect from FY2008/2009.
3. Programmes are newly funded from FY2008/2009.
4. No funding is projected for FY2008/2009 as the costs have been paid upfront and other funding support has been obtained for the project.
5. Singapore Totalisator Board has approved to fund the students doing mainstream secondary and pre-vocational curriculum for FY2008/2009 and FY2009/2010.

* This is based on service-use counts plus public education outreach.

FINANCIAL YEAR 2007/2008

NCSS Fund Disbursement



FINANCIAL YEAR 2008/2009

NCSS Fund Allocation

